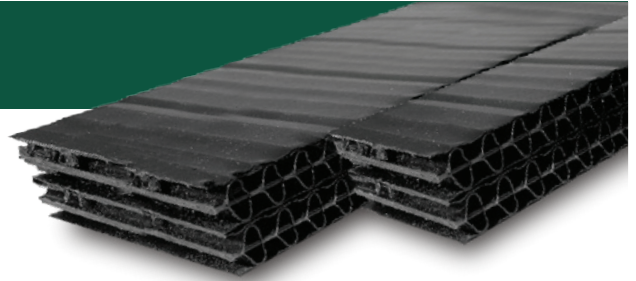


Quarrix<sup>®</sup>

# ProTect

## FURRING STRIPS



### INSTALLATION INSTRUCTIONS

#### STEP 1

After installing the water-resistant barrier (WRB), ensure that surfaces are dry and devoid of ridges, warps, or voids. Then, horizontally position the Quarrix ProTect Furring Strip just below the soffit at the uppermost part of the house wall.

#### STEP 2

Install furring strip horizontally over the weather barrier and even with the bottom of the sheathing. Install siding starter horizontally over the the bottom furring strip to kick out first course of siding.

#### STEP 3

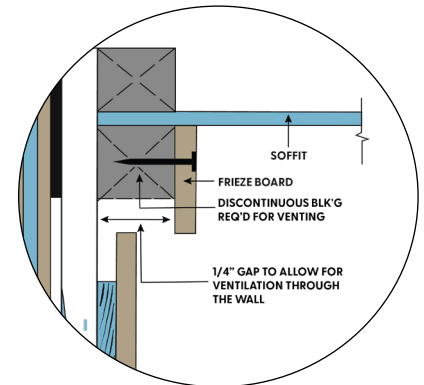
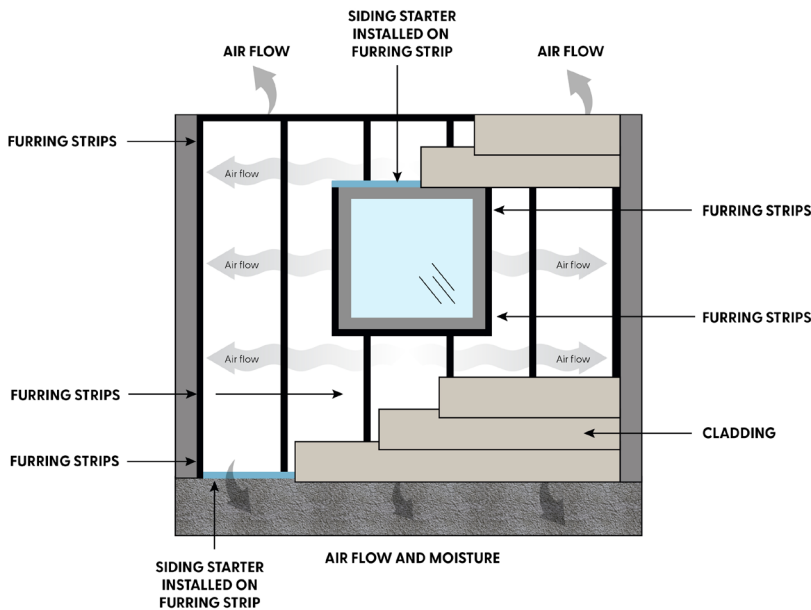
Install ProTect Furring Strips every 16" on center vertically using fasteners that penetrate plywood 1/2" (furring strips can be installed horizontally if needed).

#### STEP 4

Quarrix ProTect Furring Strips should be installed approximately 1" from the edge of the wall. Furring Strips should also be used under trim, in corners and around windows. The Furring Strips should be installed to support the width of the trim.

#### STEP 5

Attach siding according to manufacturers' specifications and building codes using fasteners long enough to sufficiently penetrate into framing.



\*If different wood or metal structural furring strips are required along the wall, ProTect Furring Strips can provide valuable wall system support at the top and bottom of the wall to allow proper ventilation of cavity to remove moisture and keep the wall protected and dry.

